

THE RESERVE GROUP



TRG Overview

THE RESERVE GROUP



Relationships and Accomplishments

General Information

- Family-based private equity firm, established in 1995
- Long-term holdings of twelve (12) companies, sited in eight (8) states and international
- Over **1.5*** million sq. ft. of manufacturing space
- Over **1400*** employees

* Being revised to reflect recent acquisition

Platform Capabilities

- Metal stampings, including deep draw & blanking
- Steel forming & rolling
- Steel forgings and machining
- Composite Reaction Injection Molding (RIM)
- Metal fabrication
- Brass/Copper alloy castings
- Gray Iron castings
- Biometric identity solutions
- Value-added engineering, service & assembly functions

THE RESERVE GROUP



Relationships and Accomplishments

Overview of Portfolio Companies

Note: additional details can be found
in the appendix

THE RESERVE GROUP



Relationships and Accomplishments

Spartanburg
STEEL PRODUCTS INC.

Year Acquired: 1982

Location: Spartanburg, SC

Description: Full-service supplier of metal stampings, welded sub-assemblies and major body modules serving the automotive and industrial markets.





Spartanburg Steel Products

1290 New Cut Road
Spartanburg, SC 29304

www.ssprod.com

"More than parts, we're partners"

Scotland Manufacturing

22261 Skyway Church Road
Laurinburg, NC 28353

www.scotlandmanufacturing.com



Rick Childs
VP Sales
rchilds@ssprod.com
Cell (864) 921-0409

Vision Statement

We are our customers' first choice.

We deliver and sustain superior results by focusing on excellent customer service, reliability, and innovation.

We are committed to developing servant leaders and making SSP a great place to work.

Core Capabilities

Employees – 500

Stamping – progressive, tandem and transfer dies

Press tonnage range 100 to 2000 ton

Material thickness – up to ¼ inch thick

Volume range – 5,000 to 2,000,000 EAU

Deep draw capabilities – 250 ton capacity

Welding

Robotic MIG welding and spot welding

Manual MIG and spot welding

PED welding

Hemming

Sealer application

Post paint assembly

Manage paint outsource

Bolt up assembly – automated line

Combining customer supplied components with welded assemblies

Providing turn-key- bolt up modules for OEM production line

Materials

Mild & High strength steels

Markets Served

Automotive

Recreational

Turf

Agriculture

Heavy Truck

Safety / Quality / Delivery / Engineering

Active safety program

ISO 9001:2009 – industry leading

TS16949

On-time delivery

Technical leader in "non-auto" stamping & assembly

Co-development specialist for new products

THE RESERVE GROUP



Relationships and Accomplishments



Year Acquired: 2015

Location: Mt. Vernon, OH

Description: Fabrication –
stamping, bending, and
welding of decorative exhaust
assemblies, metallic gaskets
and wire forms.





AMG Industries

200 Commerce Drive
Mt. Vernon, OH 43050

www.amgindustries.com



Jak Smith
VP of Sales
jsmith@amgindustries.com
(740) 397-4044 x 223

Vision Statement

Our vision is that our Customers recognize us as a world class partner, using Innovative assembled solutions for their various products in diversified markets.

Core Capabilities

Employees – 140

Laser Cutting

Multiple fiber lasers

Capable of cutting up to 0.125 in thicknesses

Stamping

Multiple automatic punch presses from 60 – 300 tons

Multiple secondary presses from 80 – 200 tons

Welding

Multiple MIG pulse manual welders

Multiple OTC and Motoman robotic weld cells

Multiple spot welders up to 175 KVA

Tube Bending

Horizontal and vertical tube bending

Parts Washing System

Multiple station washing systems

Test and Inspection

CMM

3D Laser Scanner

Materials

Cold rolled carbon steel

Hot rolled pickled and rolled (HPRO)

High-strength, low alloy (HSLA)

Stainless – 304, 409, 409AL

Aluminum

Brass

Copper

Markets Served

Automotive exhaust, trim and axle

Compressor – natural gas and air

Metallic gaskets

Wire forms

Safety / Quality / Engineering

Industry leading safety record

ISO 9001:2008

THE RESERVE GROUP



Relationships and Accomplishments



Year Acquired: 1979

Location: Laurinburg, NC

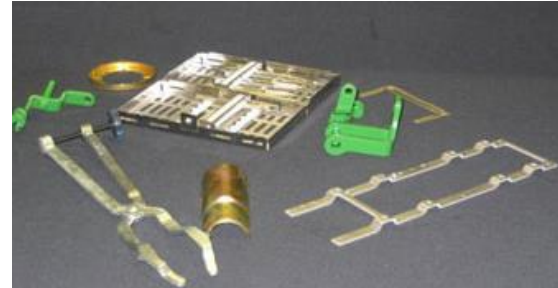
Description: Press capability from 550 to 1000 tons. Focus is in the areas of compressor housings, filter shells and other deep drawn stampings for the industrial, automotive and heavy truck markets. Ag and construction markets include stamping and complex assemblies applications.



THE RESERVE GROUP



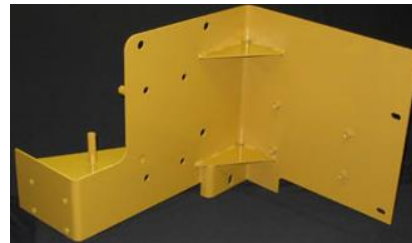
Relationships and Accomplishments



Year Acquired: 2014

Location: Coon Rapids, MN

Description: Fabrication – from the simple to the complex. Capabilities include – stamping, punching, forming, laser cutting, certified welding, machining, coating, assembly, engineering & design support, to name a few. Major markets include – construction, medical, electronics, leisure, agriculture, and transportation.





Modern Tool, Inc

1200 Northdale Boulevard
Minneapolis, MN 55448

www.moderntoolinc.com



(763) 754-7337

*"Precision Metal Fabrications &
Stampings"*

Vision Statement

To be the most respected and successful full service metal fabrication company in the markets we serve

Core Capabilities

Employees – 130

Laser Cutting

Multiple CO2 lasers up to 6kW

Multiple Fiber lasers

Capable of cutting up to 0.75 inch thicknesses

Turret Presses

Multiple punching centers

Max work piece: 60 x 120 inches x 0.25 inch thick

Stamping

Multiple punch presses from 56 to 400 tons

Max work piece is 32 x 84 inches x 0.312 inch thick

Press Brake Forming

Multiple brake presses, 5-axis, from 60 to 440 tons

Up to 13.5 feet bed length

Welding

Multiple MIG pulse manual welders

Multiple ABB robotic weld cells

Multiple spot welders up to 175 kVA

Test & Inspection / Paint / Assembly

NDE, including

CMM, Vision Scanner

Multiple powder coat lines and ovens

Assembly, kitting and container programs

Materials

Cold rolled carbon

Hot rolled pickled and rolled (HPRO)

High-strength low-alloy (HSLA)

Stainless

Aluminum

Brass

Copper

Markets Served

Mass transit, Industrial, Automated Guided Vehicles

Ag, Forestry, and Construction Equipment

Power Systems, Golf & Turf, Recreational Products

Safety / Quality

Active safety program

ISO 9001:2008

THE RESERVE GROUP



Relationships and Accomplishments



ROMEORIM
COMPLETE COMPOSITE SOLUTIONS

Year Acquired: 1982

Location: Romeo, MI

Description: World-class molder of energy absorbing bumpers and parts for OEM's in the mass transit, agricultural, heavy truck specialty automotive and leisure markets. A process / product innovator, such as long fiber injection (LFI) and in-mold paint technology.





Romeo RIM, Inc.
74000 Van Dyke Avenue
Romeo, MI 48065

Main (586) 336-5800
Fax (586) 752-5021
www.romeorim.com



Matthew Getty
V.P. of Business & Product Development
matt.getty@romeorim.com
Office (586) 336-5877
Cell (248) 884-5599

Vision Statement

Customers recognize us as a World-Class global partner, innovating composite solutions for their products and markets. **Core Capabilities / Materials**

- 170 Employees serving North America, South America, and Europe
- Innovation leaders in processing of Open / Closed mold Reaction Injection Molded Products, including...
 - Traditional Reaction Injection Molding (RIM) Systems to include:
 - Polyurethane
 - Rigid Low Density
 - Solid Elastomers
 - Structural Foam
 - Dicyclopentadiene "DCPD"
 - LFI (Long Fiber Injection) Composites
 - Polyurethane composite process that utilizes structural foam and chopped fiberglass
 - Bonding, Painting, Assembly, CNC Trimming and Cutting

Value we Provide to Our Customers...

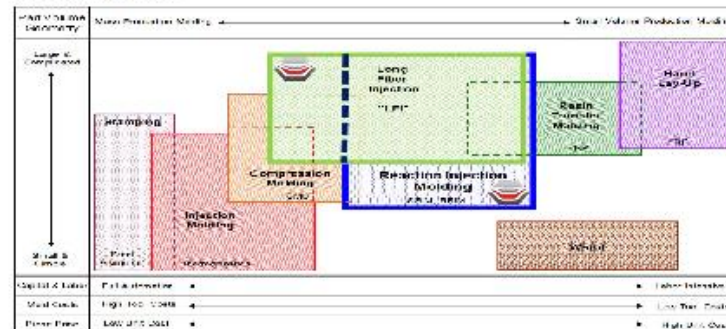
- Light weighting through composite technologies
- Superior engineering and technology capabilities that produce large parts and improves quality, while delivering lower cost
- Plastic/Composite parts that achieve high stiffness and exceptional impact resistance
- Part appearances ranging from glossy to textured at low costs through in-mold painting
- Low tooling costs, as our processes are low pressure

Markets Served – Tier-1, Full-Service Supplier (FSS) to:

Agriculture, Construction, Heavy Truck, Mass Transit, Automotive, and Spa

Safety / Quality

Active Safety Program
ISO 9001 / ISO 14001



THE RESERVE GROUP



Relationships and Accomplishments

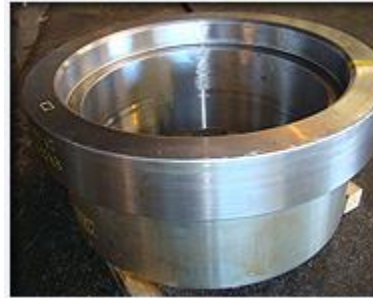


Year Acquired: 1984

Location: Houston, TX

Description: Manufacturer of large (50-55,000 lbs), open-die, and custom carbon, alloy or stainless steel forgings to customer specifications, including rough to finished machining capabilities.

Markets include: oil & gas, machine tool, pumps, heat exchangers / pressure vessels.





Forged Products, Inc.

6505 N. Houston-Rosslyn Road
Houston, Texas 77091

www.fpbx.com

Forging a Difference for over 50 Years



Chris Rios
Senior VP of Sales & Marketing
orios@fpbx.com
Cell (832) 754-5291

Vision Statement

Forged Products, Inc. is creating a high growth forging company providing value for global customers in diverse industries through innovative, full service engineered solutions delivered timely, safely and error free.

Core Capabilities

Employees – 54

Forging Presses

6500 ton United hydraulic press

3000 ton Bliss hydraulic press

Machine Shop

Rough machining – vertical and horizontal boring, mills

Finishing machining – turning, milling, 5-axis

Heat Treating

In-house normalize, water quench & temper

Contract other heat treat (i.e. oil or polymer)

Materials

Chemistry

Carbon

Alloy

Stainless

Duplex

Capacities

Up to 65,000 pound cut weight

Up to 120 inches max length on cylinders / blocks

Up to 14 feet max length on bars

110 inches on diameters

Markets Served

Oil & Gas

Power Generation

Chemical

Industrial

Safety / Quality / Engineering

Industry leading safety record

ISO 9001:2008

THE RESERVE GROUP



Relationships and Accomplishments



**SHARPSVILLE
CONTAINER**

Year Acquired: 1997

Location: Sharpville, PA

Description: Manufactures a wide range of stainless and carbon tanks, vessels, reactors, hazardous material shipping containers, and high-pressure gas cylinders. Markets include the food, beverage, dairy chemical, petrochemical, and pharmaceutical.





Sharpville Container Corp

600 Main Street
Sharpville, PA 16150

www.sharpvillecontainer.com

*"Products and Capabilities that
work for your business"*



SHARPSVILLE
CONTAINER

Harris Rogner
Sales Manager
hrogner@scacon.com
Cell (330) 647-8205

Vision Statement

Sharpville Container is a full service fabricator of process equipment. We proudly fabricate carbon steel, stainless steel, and specialty metal components and systems.

Core Capabilities

Employees 30

Hydraulic Forming Press

250 ton capacity for deep draws. Head Stamping up to 12GA thick, 9", 12", and 21.5" Dia.

Punch Press

Multiple centers

150 ton capacity

Other Metalworking Centers

Lathes

Drills

Vertical Milling

Shears

Tube / Pipe Forming

CNC Hydraulic Tube Bender

Max 2 inch pipe

Welding

Manual / Automatic TIG

Seam Welders

Spot welding

Key Hole Tig Welding "KTIG"

Test & Inspection / Assembly

NDE, including Welding & Metallographic Labs Radiographic, Ultrasonic, and Liquid Penetrate testing

Assembly, kitting and container programs

Materials

Stainless

Carbon

Alloys

Markets Served

Food, Dairy, and Beverage

Chemical, Pharmaceutical, and Energy

Industrial. Hazardous Material Transport

Safety / Quality / Certification

Active safety program

ISO 9001:2008

ASME, Section VIII – Div 1

UN / DOT, UN1A1, UN31A, DOT-39, TPED

THE RESERVE GROUP



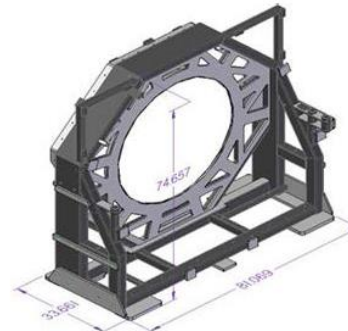
Relationships and Accomplishments



Year Acquired: 2004

Location: Kincheloe, MI

Description: Diversified supplier of medium / heavy metal fabrications – prototype development, design to manufacture thru contract manufacturing in a SoA facility. Markets include material handling, oil & gas, medical, industrial, and military vehicles.





Superior Fabrication Co, LLC

17499 S Dolan St
Kincheloe MI 49788

www.supfab.com

A master fabricator of heavy-duty steel components



Jay Miller
VP of Sales
jmill@supfab.com
Cell (906) 630-0382

Vision Statement

Superior Fabrication is a high growth company with a diversified market base in the medium/ heavy metal fabrication industry. Customers are provided quality innovative products and technical expertise that result in exceptional customer satisfaction.

Core Capabilities

Employees 115

Engineering and Design

Solid Edge modeling and drafting
Mathsoft Math CAD
Feature CAM and WE-CIM CNC

Strain Smart strain gaging
FeMap FEA with Nastran Software

Steel Processing

Blasting:

Drive in Empire Blast Booth

Pangborn Rotoblast

Burning:

MG 4 Torch cutting system 16' x 20'

Messer 3 Torch High Def Plasma / Oxy 8' x 30'

Sawing:

Marvel Model 81, 18" X 20" Section
Pegasus semi-automatic 12" X 19" Section

Marvel 8M8 16" X 16" Section
Hem Saw Side Winder 12" X 16" Section

Forming:

Up to 1.25" and straightening up to 4"

5 presses, the largest is 750 ton

Welding – Manual and Robotic methods using the following processes:

GMAW (Gas Metal Arc Welding)
SAW (Submerged Arc Welding)
PAC (Plasma Arc Cutting)

FCAW (Flux Cored Arc Welding)
CAG (Carbon Arc Gouging)

Machining:

CNC Horizontal Milling Machines
CNC Horizontal Lathes
CNC Vertical Machining Centers
CNC Horizontal Machining Centers
CNC Lathes

CNC Horizontal Boring Mills
CNC Vertical Milling Machines
Manual Vertical Mill
Manual Horizontal Mill
Manual Lathes

Inspection

Ultrasonic Testing, Dye Penetrant Testing, Magnetic Particle Testing, Hardness Testing,
Coordinate Measuring Machines both stationary and portable- Max Size: 60" x 90" x 110"
ISO 9001:2008

Coating

Steam Cleaning & Phosphate Washing
Large capacity open paint booth system

Part Painting with wet on wet system
CARC Painting

Assembly: As Required up to 10 ton lifting capacity.

Materials

Carbon Alloy Stainless Duplex

Markets Served

Material Handling Oil & Gas Medical Defense
Industrial

THE RESERVE GROUP



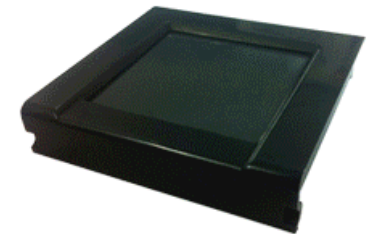
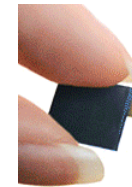
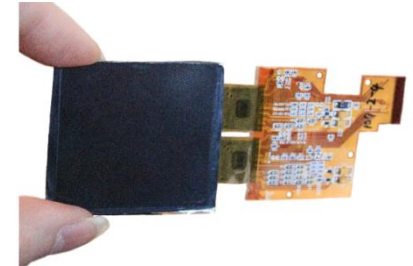
Relationships and Accomplishments



Year Acquired: 2008

Location: Spartanburg, SC

Description: Provides identity solutions in the Physical Access, Network Access, and Custom Application categories. Solutions range from individual components, integration, and compete systems.





Integrated Biometrics, LLC

121 Broadcast Drive
Spartanburg, SC 29303

www.integratedbiometrics.com

"LES is more"



Dave Gerulski
VP Sales & Marketing
DG@integratedbiometrics.com
Cell (770) 906-3263

Messaging Statement

Integrated Biometrics Designs and builds the lightest, fastest, most accurate FBI certified fingerprint sensors, for The World's leading biometric enrollment and verification solution providers.

Core Capabilities

- Approaching 50 employees – multi-national operations
- FBI Certified Finger Print Scanner development and production
- FBI Certified Sizes:
 - Single Finger FAP 30 – Columbo "model"
 - Two Finger FAP 45 – Sherlock & Watson Mini "models"
 - Live Scan FAP 50 (coming soon)
 - Four Finger FAP 60 – Kojak "model"
- Customized designs
- 30 US and International Patents

Markets Served

- Government's World Wide** - National ID Programs, Immigration Controls, Law Enforcement, Defense and Military, Homeland Security, Electoral Systems, Social Services, Background Checks
- Commercial** – Health Care, Financial Markets, Physical Access Control, Point of Sale, Hospitality, Loyalty Clubs, Education

Quality – ISO 9001 Certified

THE RESERVE GROUP



Relationships and Accomplishments

Lee Brass

Year Acquired: 2012

Location: Anniston, AL

Description: A brass and copper-based alloy foundry (including low-lead, NS 61 certified alloys) servicing three primary markets: Marine, Plumbing / Industrial, and commercial Original Equipment Manufacturers (OEM). Capabilities include casting, machining and assembly.





Lee Brass

1800 Golden Springs Road
Anniston, AL 36207

www.leebrass.com

"For all that WaterTouches..."

Lee Brass

Chuck Glasgow
VP of Sales & Marketing
chuck.glasgow@leebrass.com
Cell (205) 873-0441

Vision Statement

Lee Brass is a high volume green sand foundry specializing in the casting and machining of cored and non-cored lead free and leaded brass castings that weigh between ounces to 20 pounds with industry leading lead times: Four (4) to Six (6) weeks from PO confirmation to shipment.

Core Capabilities

Employees - 260

Foundry

Vertically parted Disamatic – only vertical brass molding center in the US:

High speed, fully automated – up to 5,000 molds per day

Pattern – 15.875" x 19.875" plate size

Up to 16" in length

Up to 20-pound castings

Lot sizes from 50 to thousands per order

Horizontally parted Robert Sinto FBO3:

High speed, fully automated – up to 2,800 molds per day

Pattern – 20" x 24" plate size

Up to 20" in length

Up to 20-pound castings

Lot sizes from 50 to thousands per order

Machining

CNC

Lathes

Milling

Other dedicated
conventional centers

Materials

Low Lead Brass & Bronze Alloys

C89833

C86200

C96200

C89833 Modified

C86300

C96400

C87600 Silicon Bronze

C99500

Leaded Brass & Bronze Alloys

Brass – C84400, C83600

Mg Bronze – C86400 /

C86500 / C86700

Navy M – C92200

Markets Served

Yard & Fire Hydrant

Electrical

Pumps

Valve

Boilers

Industrial

Plumbing

Shower & Faucets

Marine

Irrigation

Water Works

....and more

Safety / Quality / Engineering

Industry leading safety record

Quality designed into every casting and process makes it possible for Lee Brass to meet and exceed US government Level 1 requirements.

Engineering support from design, through pattern making, casting and finishing

THE RESERVE GROUP



Relationships and Accomplishments



Year Acquired: 2013

Location: Ludington, MI

Description: Gray iron casting foundry providing industry leading delivery times across the spectrum of volumes.

Markets served: construction, valve, pump, agricultural, gas, automotive, HVAC and others.





Great Lakes Castings

800 N. Washington Avenue
Ludington, MI 49431

www.greatlakescastings.com



Eric Bansch
VP of Sales & Marketing
ebansch@greatlakescastings.com
Direct (231) 845-3417

"High Quality Gray Iron Castings"

Vision Statement

"Exceptional lead times and customer experiences."

Core Capabilities

Employees – 225

Molding

2013 B Disamatic molding for high production volumes

Hunter 20" x 24" with stacking turntable

Hunter 14" x 19" with turntables

Disa Match 130 20" x 24" stacking turntable

Roberts Sinto FBO 20" x 24" with turntable

Annealing

Three (3) belt-type annealing furnaces

Materials

Chemistry

All standard grades of gray iron (no ductile / malleable)

Base iron – 30,000 psi

Tensile from 18,000-40,000 psi

Capacities

From 0.5 – 50 pounds

Fitting within a 20 x 24 inch mold, roughly 16 inches (8 x 8 inches) high

Lot sizes – from 50 pieces to thousands per order

Annual volume minimum – 5,000 pounds

Pattern Shop/Engineering

Solidification Modeling – Finite Solutions

Portable laser scanning arm

In-house pattern shop – new tooling capabilities

Markets Served

Valves

Pumps

Construction

Power Transmission

HVAC

Automotive

Oil & Gas

Electric Motors

Bearing

Architectural Hardware

Speed Reducers

Industrial

Agricultural

Lighting

Compressors

Office Furniture

Safety / Quality / Delivery

Recordable Injury Rate – below the industry average – past 5 years - year over year improvement

ISO/TS 16949:2009

Industry leading lead-time (3 weeks from receipt of purchase order to shipment)